

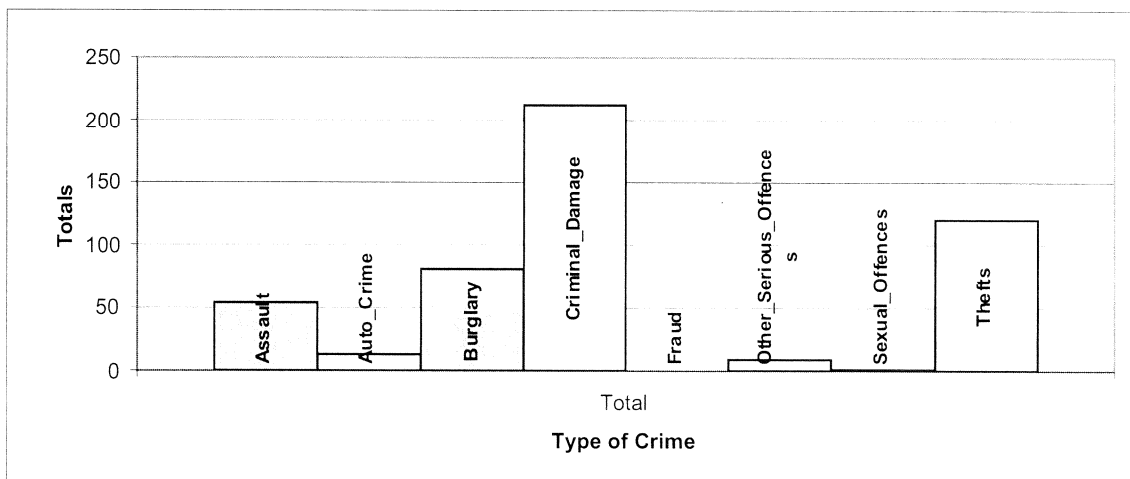
ORGRNAME	ASSAULT	AUTO CRIME	BURGLARY	CRIMINAL DAMAGE	OTHER SERIOUS OFFENCES	THEFTS	SEXUAL OFFENCES	Grand Total
ACOMB PRIMARY SCHOOL	1	0	4	16	1	1	0	23
ALL SAINTS RC COMPREHENSIVE SCHOOL	0	2	1	1	0	10	0	14
APPLEFIELDS SCHOOL	0	0	5	0	0	1	0	6
ARCHBISHOP HOLGATES SCHOOL	1	1	11	8	0	7	0	28
ARCHBISHOP OF YORK C OF E JUNIOR SCHOOL	0	0	0	0	0	0	0	1
BOOTHAM SCHOOL	0	1	2	0	0	5	0	9
BURTON GREEN PRIMARY	0	1	0	0	0	0	0	1
CANON LEE SCHOOL	7	0	0	1	0	6	0	14
CARR INFANT SCHOOL	1	0	2	7	0	0	0	9
CARR JUNIOR SCHOOL	1	0	0	5	0	0	0	6
CLIFTON GREEN PRIMARY SCHOOL	1	0	1	11	0	3	0	16
CLIFTON WITHOUT JUNIOR SCHOOL	0	0	0	0	0	0	0	1
COPMANTHORPE PRIMARY SCHOOL	0	0	0	1	0	0	0	1
DRINGHOUSES PRIMARY SCHOOL	0	0	1	2	0	0	0	3
EBOR SCHOOL	0	0	0	1	0	0	0	1
ENGLISH MARTYRS RC PRIMARY SCHOOL	0	0	0	1	0	0	0	1
FISHERGATE PRIMARY SCHOOL	0	0	1	7	0	0	0	7
FULFORD CROSS SPECIAL SCHOOL	2	0	1	2	0	0	0	3
FULFORD SCHOOL	4	0	1	0	0	4	0	7
GALFRES SCHOOL	0	0	1	1	0	2	0	4
HAXBY ROAD PRIMARY SCHOOL	0	1	0	2	0	0	0	3
HEADLANDS PRIMARY SCHOOL	0	0	0	1	0	0	0	1
HEMPLAND LANE SCHOOL	0	0	0	0	1	0	0	1
HEWORTH C OF E PRIMARY SCHOOL	1	0	1	0	0	0	0	2
HOB MOOR SCHOOL	0	0	4	15	0	2	0	22
HUNTINGTON PRIMARY SCHOOL	0	0	1	1	0	1	0	3
HUNTINGTON SCHOOL	2	0	2	5	0	10	0	19
JOSEPH ROWNTREE SCHOOL	3	0	4	2	1	7	0	17
KINGSMAY JUNIOR SCHOOL	0	0	0	1	0	0	0	1
LAKESIDE PRIMARY SCHOOL	0	0	0	5	0	0	0	5
LIDGETT GROVE SCHOOL	0	0	0	0	0	1	0	1
LORD DERAMGRES PRIMARY SCHOOL	0	0	2	2	0	0	0	2
LOWFIELD SCHOOL	6	2	2	2	1	3	0	16
MANOR C OF E SCHOOL	1	0	0	8	1	4	0	14
MILLTHORPE SCHOOL	5	1	7	28	1	13	0	55
NEW EARSWICK PRIMARY SCHOOL	1	0	1	4	0	0	0	6
NORTHFIELD SCHOOL	1	0	3	5	0	0	0	9
OAKLANDS SCHOOL	8	0	8	27	1	9	1	54
OSBALDWINCK PRIMARY SCHOOL	1	0	0	0	0	0	0	1
OUR LADYS RC PRIMARY SCHOOL	0	0	0	2	0	0	0	2
OUSEBANK PRIMARY SCHOOL	0	0	0	0	0	0	0	0
PARK GROVE SCHOOL	0	0	1	0	0	0	0	1
POPPELTON ROAD PRIMARY SCHOOL	0	0	0	2	0	0	0	2
ROBERT WILKINSON PRIMARY SCHOOL	0	0	0	0	0	1	0	1
SCARCROFT PRIMARY SCHOOL	0	0	0	0	0	1	0	1
SKELTON PRIMARY SCHOOL	0	0	0	2	0	0	0	2
ST AELREDS RC PRIMARY SCHOOL	0	0	0	7	1	1	0	9
ST ALFRED'S C OF E PRIMARY SCHOOL	0	0	0	2	0	0	0	2
ST BARNABUS C OF E PRIMARY SCHOOL	0	0	0	1	0	0	0	1
ST GEORGES RC PRIMARY SCHOOL	0	0	0	1	0	1	0	2
ST LAWRENCE'S C OF E PRIMARY SCHOOL	0	0	2	2	1	0	0	5
ST PETERS SCHOOL	0	0	2	0	0	6	0	8
ST WILFRIDS RC PRIMARY SCHOOL	0	2	4	2	0	0	0	8
STEINER SCHOOL	0	0	0	0	0	0	0	0
STOCKTON ON THE FOREST PRIMARY SCHOOL	0	0	2	0	0	0	0	2
TANG HALL PRIMARY SCHOOL	1	0	0	0	0	1	0	2
THE MINSTER SCHOOL	0	0	0	4	0	2	0	6
THE MOUNT SCHOOL	0	1	0	0	0	1	0	2
WESTFIELD COUNTY INFANT SCHOOL	0	0	1	5	0	3	0	9
WESTFIELD PRIMARY SCHOOL	4	0	2	3	0	0	0	9
WHELDRAKE PRIMARY SCHOOL	2	0	0	2	0	0	0	4
WOODTHORPE PRIMARY SCHOOL	0	0	0	0	0	0	0	0
YEARSLEY GROVE PRIMARY SCHOOL	1	0	2	0	0	0	0	3
YORK STEINER SCHOOL	0	0	1	0	0	0	0	1
Grand Total	54	13	81	212	9	120	1	490

Architectural Liaison Officer Report

Crime Analysis Study Area:	=	<input type="text" value="Crimes at York Schools"/>
Details of Search	=	<input "pupil""="" or="" school"="" type="text" value="Using initial keywords of "/>
		<input type="text" value="Then Locations checked to make sure on School Premises"/>
Study Period Start:	=	<input type="text" value="01/04/2004"/>
Study Period End:	=	<input type="text" value="31/03/2005"/>
Date Study Completed	=	<input type="text" value="26/06/2007"/>
Number of Months in Study Period	=	<input type="text" value="12"/>
Geocoding Accuracy Rate	=	<input type="text" value="95%"/>

Crime Group	Total
Assault	54
Auto_Crime	13
Burglary	81
Criminal_Damage	212
Fraud	0
Other_Serious_Offences	9
Sexual_Offences	1
Thefts	120
Grand Total	490

A Table of Crime in the Study Area (Above) and corresponding Graph (Below)



A Table of Crime by Crime Group and then Crime Type

EVENT_GROUP	HO_DESCRIPTION	Total
ASSAULT	COMMON ASSAULT ETC.	13
	OFFENCE OF HARRASSMENT	1
	OTHER WOUNDING ETC.	34
	POSSESSION OF WEAPONS WITH INTENT	4
	PUBLIC ORDER OFFENCES	1
	WOUNDING OR OTHER ACT ENDANGERING LIFE	1
AUTO_CRIME	THEFT FROM VEHICLE	10
	THEFT OR UNAUTHORISED TAKING MOTOR VEHICLE	1
	VEHICLE INTERFERENCE	2
BURGLARY	BURGLARY IN A BUILDING OTHER THAN A DWELLING	81
CRIMINAL_DAMAGE	ARSON	4
	CRIMINAL DAMAGE OTHER	33
	CRIMINAL DAMAGE TO OTHER BUILDINGS	153
	CRIMINAL DAMAGE TO VEHICLES	22
OTHER_SERIOUS_OFFENCES	GOING EQUIPPED FOR STEALING ETC.	1
	OTHER OFFENCE AGAINST STATE OR PUBLIC ORDER	1
	TRAFFICKING IN CONTROLLED DRUGS	7
SEXUAL_OFFENCES	TRAFFICKING FOR SEXUAL EXPLOITATION	1
THEFTS	OTHER THEFT OR UNAUTHORISED TAKING	70
	ROBBERY OF PERSONAL PROPERTY	3
	TAKE/RIDE PEDAL CYCLE WITHOUT CONSENT	1
	THEFT OF PEDAL CYCLE	46
Grand Total		490

A Table of Crime by Month of the Year and Hour of the Day in the Study Area

Month	Total
Jan	27
Feb	45
Mar	39
Apr	48
May	67
Jun	37

Month	Total
Jul	52
Aug	32
Sep	47
Oct	39
Nov	25
Dec	32

Crime Day	Total
Mon	74
Tue	59
Wed	70
Thu	87
Fri	119
Sat	44
Sun	37
Grand Total	490

Grand Total

490

Expected Average Crime per Month = **40.8**

Expected Average Crime per Day = **70**

A Table of Crime by Hour of the Day in the Study Area

	00:00	01:00	02:00	03:00	04:00	05:00	06:00	07:00	08:00	09:00	10:00	11:00	12:00	13:00	14:00	15:00	16:00	17:00	18:00	19:00	20:00	21:00	22:00	23:00	Total
Total	12	1	2	2	1	0	0	5	24	31	8	14	35	29	26	37	35	51	76	32	17	14	35	3	490

Crimes by Hour of the Day

